



DON'T LEAVE YOUR WASTE IN MY PLACE...*Litter in Storm Drains*



A storm drain is designed to carry rain water from parking lots and streets to reduce flooding on the roadway.



Litter such as plastic bags, soda cans, plastic bottles, and paper left on the road can enter into storm drains and prevent rain water from entering into a nearby stream or river.



Litter on the road can be carried by storm (rain) water and could potentially harm pets, drinking water, animals in the water, and the environment.



YOU can protect storm drains, rivers and streams, and the environment by not tossing litter on the ground and encouraging your friends and family to recycle.



Jefferson County Department of Health
Watershed Protection Program

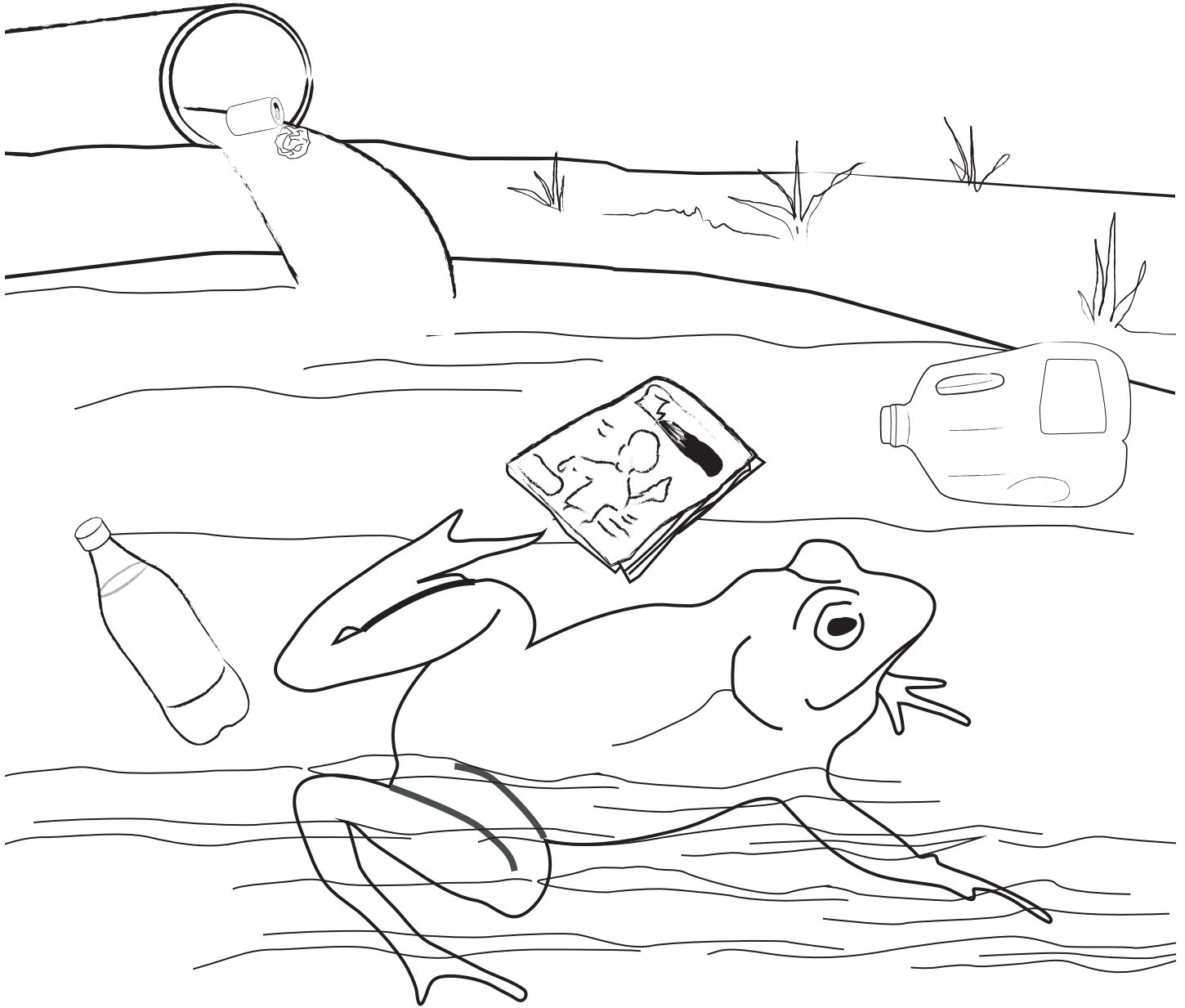
www.jcdh.org

DON'T LEAVE YOUR WASTE IN MY PLACE

Litter in Storm Drains Coloring Sheet

Litter from storm drains enters into the waterway where Clog the Frog calls home. Help protect Clog the Frog from litter items being carried into the waterway by the storm drain. Remember Recycling is the key. Clean water is important for you and me.

Find and circle each litter item below.



Jefferson County Department of Health
Watershed Protection Program

www.jcdh.org