

# Monthly Air Quality Report

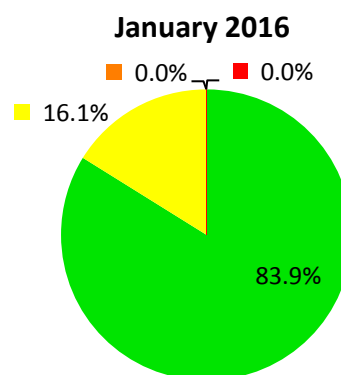
## January 2016 · Birmingham, AL



### SUMMARY

This report presents daily maximum Air Quality Index (AQI) values and corresponding AQI colors from five different pollutants monitored in the Birmingham area: carbon monoxide (CO), particulate matter (PM<sub>10</sub> and PM<sub>2.5</sub>), ozone (O<sub>3</sub>), and sulfur dioxide (SO<sub>2</sub>). The table and figure below show the number of days and percentage of days in each AQI category, respectfully, for the month.

January 2016	
AQI Category	Number of Days
Good	26
Moderate	5
Unhealthy for Sensitive Groups	0
Unhealthy	0



### AQI CHART

AQI Levels of Health Concern	AQI Value	Actions to Take
Good	0-50	None
Moderate	51-100	Unusually sensitive people should consider limiting prolonged outdoor exertion
Unhealthy for Sensitive Groups	101-150	The following groups should limit prolonged outdoor exertion: <ul style="list-style-type: none"> <li>• People with heart or lung disease</li> <li>• Children and older adults</li> <li>• People who are active outdoors</li> </ul>
Unhealthy	151-200	The following groups should avoid prolonged outdoor exertion: <ul style="list-style-type: none"> <li>• People with heart or lung disease</li> <li>• Children and older adults</li> <li>• People who are active outdoors</li> </ul> Everyone else should limit prolonged outdoor exertion
Very Unhealthy	201-300	The following groups should avoid all outdoor exertion: <ul style="list-style-type: none"> <li>• People with heart or lung disease</li> <li>• Children and older adults</li> <li>• People who are active outdoors</li> </ul> Everyone else should limit outdoor exertion

## DAILY AQI VALUES

The table below shows this month's daily maximum AQI values and corresponding AQI category for each pollutant. O<sub>3</sub> is not reported November through February.

Date	CO	PM <sub>10</sub>	PM <sub>2.5</sub>	SO <sub>2</sub>
1	3	11	46	2
2	9	12	40	3
3	11	11	35	3
4	6	9	28	3
5	20	8	23	4
6	7	8	30	2
7	7	11	35	3
8	8	9	32	3
9	8	4	16	2
10	5	6	18	3
11	13	10	37	32
12	14	15	52	8
13	11	23	38	3
14	13	27	62	5
15	8	20	61	10
16	7	8	26	3
17	6	9	33	4
18	6	9	26	4
19	8	10	39	14
20	9	16	43	5
21	7	12	53	14
22	6	5	22	2
23	6	11	44	4
24	11	12	46	44
25	13	14	47	7
26	8	9	36	5
27	7	9	41	1
28	7	11	30	4
29	14	16	33	2
30	16	19	58	7
31	7	8	29	3

All data displayed in this report is preliminary and have not been through quality assured and quality controlled procedures. The AQI is used for forecasting and reporting daily air quality and is not used for compliance purposes. For daily air quality forecasts and real-time monitoring data, go to [www.jcdh.org](http://www.jcdh.org) and click on the link on the left-hand side of the page titled, "Air Quality Forecast/Index."

## AIR QUALITY ALERTS

Air quality alerts are issued for days that are forecast to have AQI values greater than 100 for O<sub>3</sub> and/or PM<sub>2.5</sub>. O<sub>3</sub> is forecast by the Alabama Department of Environmental Management from mid April through mid October. PM<sub>2.5</sub> is forecast by the Jefferson County Department of Health year-round.

No air quality alerts were issued in January. There have been a total of 0 air quality alerts issued in 2016 through January.

## METEOROLOGICAL CONDITIONS

The calendar below shows all reported weather conditions within the hourly weather observations for each day of the month from the National Weather Service's station located at the Birmingham International Airport.

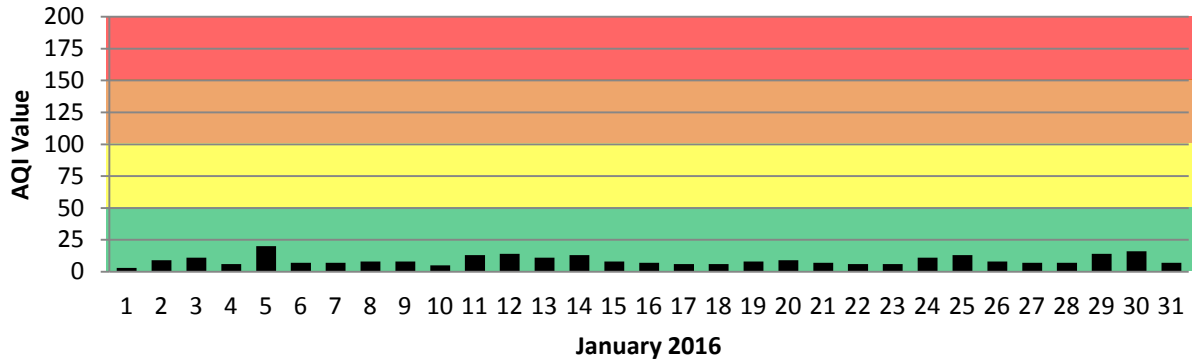
JANUARY 2016						
SUN	MON	TUE	WED	THU	FRI	SAT
					1	2
3	4	5	6	7 RA	8 BR	9 BR, RA, TS
10 BR	11	12	13	14	15 BR, RA	16 BR
17	18	19	20 RA	21 BR, RA	22 BR, DZ, RA, SN	23
24	25	26 BR, RA	27 BR	28	29	30
31						

Weather phenomena and obscuration notations as used by the National Weather Service:

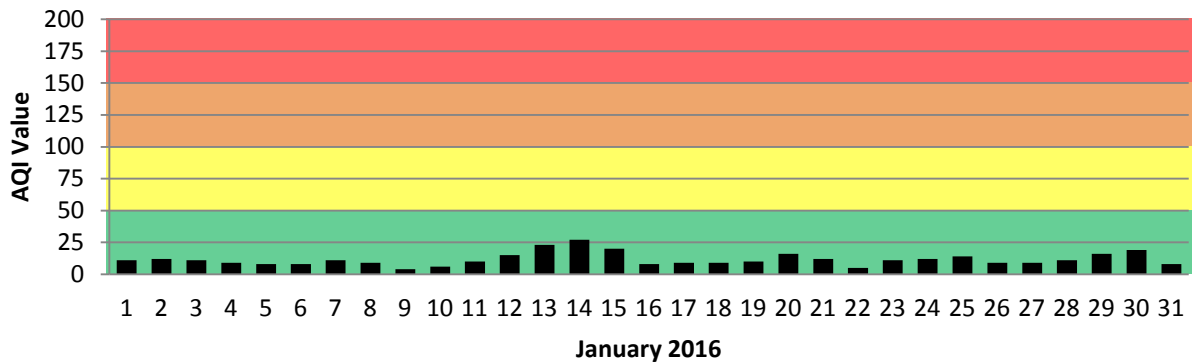
Drizzle (DZ)	Fog (FG)	Freezing Drizzle (FZDR)	Freezing Rain (FZRA)
Haze (HZ)	Hail (GR)	Ice Pellets (PL)	Mist (BR)
Rain (RA)	Smoke (FU)	Snow (SN)	Thunderstorms (TS)

## GRAPHS OF DAILY AQI VALUES BY POLLUTANT

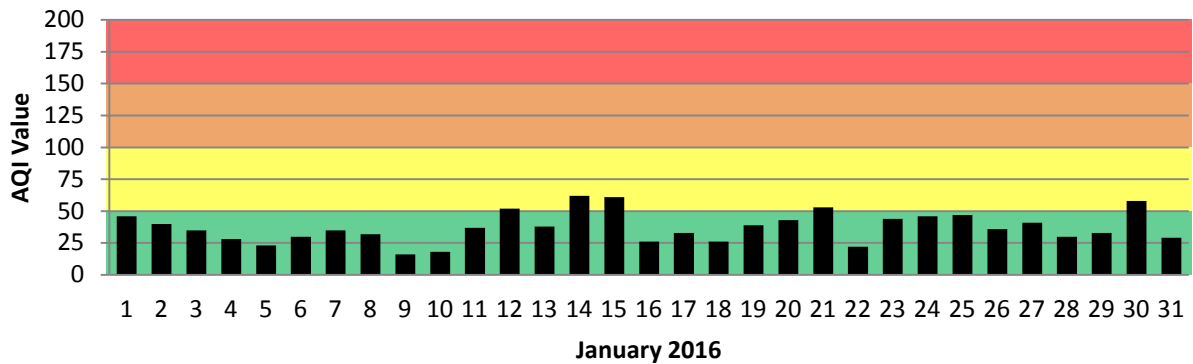
### Daily Max 8-Hour Average CO



### Daily Max 24-Hour Average PM<sub>10</sub>



### Daily Max 24-Hour Average PM<sub>2.5</sub>



## Daily Max 1-Hour Average SO<sub>2</sub>

