

# JEFFERSON COUNTY DEPARTMENT OF HEALTH



# ANNUAL REPORT



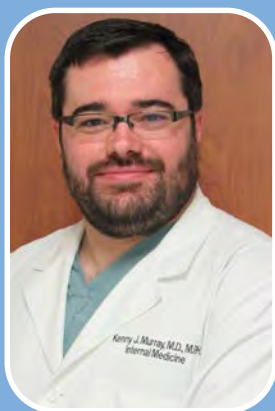




# Jefferson County Board of Health

**January 1, 2023 - December 31, 2023**

---



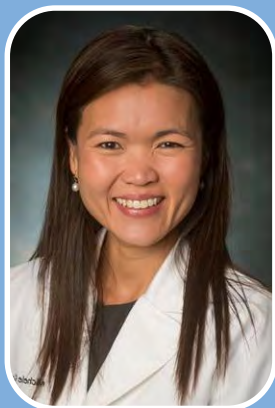
**Kenny Murray, MD, MPH**  
Chair from January-June 2023



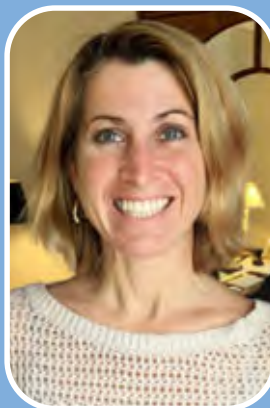
**Iris Fancher, MD, FAAP**  
Chair from July-December 2023



**Jeffrey Dobyns, DO,  
MSHA, MSHQS, FASA**  
General Liability Claims  
Committee/Investment  
Committee



**Michele Kong, MD, MBA**



**Elizabeth Turnipseed, MD,  
MSPH, FACP**  
Secretary



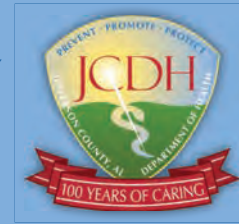
**Commissioner  
Jimmie Stephens**







# JEFFERSON COUNTY DEPARTMENT OF HEALTH



## ANNUAL REPORT

A Message from the Health Officer.....	2	Health Equity and Population Health.....	27
Response Activities.....	4	Quality Improvement and Decision Support.....	30
Clinical Services.....	7	Public Health Advised Fund.....	32
Disease Control.....	14	Board of Health Actions.....	34
Environmental Health.....	18	2023 General Financial Information.....	36
Finance and Administration.....	25	2022 Health Statistics.....	38



## A Message from the Health Officer

I am honored to serve as the new Health Officer for Jefferson County, building on the legacy of my predecessors and excitedly sharing our commitment to a healthier and more equitable community. The Jefferson County Department of Health (JCDH) is evolving to meet public health needs by embracing the role of community health strategist, ensuring our work enhances partnerships and improves residents' well-being.

Our adaptive strategic plan, developed in response to the post-COVID landscape, centers around four key directions: Collaboration with Community Partners, Health Systems Transformation, Public Health Data and Information, and Equity in the JCDH Workplace. As community health strategists, we aim to proactively address root causes of disparities by working collaboratively to implement interventions with sustainable results. Collaboration

is at the heart of our approach, recognizing that addressing public health complexities requires collective efforts. Engaging with local organizations, businesses, and community leaders, we strive to build a resilient health ecosystem and create a united front to address health disparities. Health Systems Transformation is a focal point, emphasizing innovation, efficiency, and accessibility. Our commitment is to transform health care organizations and ensure equitable access to resources for every individual in our diverse community. Harnessing data analytics is paramount to providing insights into health trends and enabling proactive responses to emerging challenges. Transparent communication and data-driven policies are pivotal for fostering community trust and ensuring effective interventions. Equity in the workplace is non-negotiable. We are dedicated to cultivating a diverse, inclusive, and respectful culture within JCDH, mirroring the diversity of the community we serve.

As we pursue these strategic directions, JCDH continues to address public health concerns. Our hospital-linked violence intervention program, Violence Intervention & Prevention Partners (VIP<sup>2</sup>), developed in partnership with the Offender Alumni Association, UAB Trauma and Acute Care Surgery, and the City of Birmingham, aims to reduce gun violence reinjury and retaliation. To combat the surge in drug overdose deaths, our Overdose 2 Action (OD2A) initiatives expanded to offer fentanyl test strips and Narcan® (naloxone) kits beyond Jefferson County within the state of Alabama. Environmental quality remains a priority through the Cool Green Trees program's tree planting to mitigate heat islands and create green buffer zones.

With the new strategic plan and ongoing efforts, JCDH is well-positioned to continually assess public health and collaborate with the community to improve health status and quality of life. I am thrilled to lead our health department into this exciting new chapter, and our success depends on the collective efforts of our community

stakeholders. Together, we can build a healthier, more resilient community grounded in collaboration, innovation, and a shared commitment to equity.



David Hicks, DO, MPH, FAAFP

*Health Officer*





# Response Activities

## COVID-19

The federal Public Health Emergency for COVID-19, declared under Section 319 of the Public Health Service (PHS) Act in January 2020, expired on May 11, 2023. Following release of the first COVID-19 vaccine in December 2020, JCDH has provided more than 34,000 doses of COVID-19 vaccine.

## Mpox

As of November 30, 2023 (<https://www.cdc.gov/poxvirus/mpox/response/2022/us-map.html>), 31,277 cases of mpox were reported in the United States, including 193 cases in Alabama. Beginning in 2023, the JCDH Sexual Health Clinic incorporated mpox response activities into its standard clinical operations, and mpox vaccines remain available through online self-scheduling at [www.jcdh.org](http://www.jcdh.org). During 2023, JCDH administered 1,597 doses of mpox vaccine. Cases of mpox have subsided since the outbreak began in 2022, and public health efforts shifted to prevention through vaccination.

## Vaccination Efforts

JCDH utilized the Incident Command System during the COVID-19 pandemic to improve coordination of emergency response activities and communication. Building on this success, the JCDH Vaccination Planning Team created during the pandemic remained intact to coordinate vaccinations for COVID-19, mpox, HPV, and the routine childhood vaccines required for school entry.

The Vaccination Planning Team partnered with JCDH's Health Equity and Population Health and Family Planning Divisions to offer Human Papillomavirus (HPV) vaccine to eligible adults. According to the Centers for Disease Control and Prevention (CDC) infection with the types of HPV causing most HPV-related cancers and genital warts decreased 88% among teen girls and 81% among young adult women since HPV vaccination was first recommended in 2006. During 2023, JCDH provided 1,038 doses of HPV vaccine to eligible adults, and the Child Health Clinics provided 2,505 HPV vaccine doses.

JCDH's 2023 "Crush the Rush" campaign provided education on vaccinations required for school entry. The Vaccination Planning Team collaborated with local school systems, the Healthcare Coalition, and the Alabama Department of Public Health (ADPH) to identify and implement strategies for improving vaccination rates and early submission of vaccination certificates. The campaign



**Crush The Rush  
For Back To School  
Registration.**

Get your kids up to date on shots and blue forms for the 2023-2024 school year.  
Enjoy your summer!

**Kick Off Saturday  
April 15  
10:00 am - 2:00 pm**  
All three locations

**EVERY Thursday  
April 20 - June 30  
2:00 pm - 6:00 pm**  
All three locations

Central Health Center  
1400 Sixth Avenue South  
Birmingham, AL 35233

Eastern Health Center  
601 West Blvd Roebuck  
Birmingham, AL 35206

Western Health Center  
631 Bessemer Super Hwy  
Midfield, AL 35228

To make an appointment  
scan the QR Code and  
select Self Scheduling or  
call (205) 588-5234

JCDH  
Jefferson County Department of Health



encouraged parents to obtain birth certificates, childcare forms, certificates of immunization, and any required vaccinations early to avoid the rush that usually occurs in the weeks leading up to the first day of school. The coordinated effort involved multiple JCDH divisions. Public Health Language Workers knocked on doors in residential communities and businesses serving the Limited English Proficiency (LEP) population to provide

**Childhood Vaccination Rates (Percent of Persons Up-to-Date on Vaccination Series by Age Group and Locale, as of November 7, 2023)\***

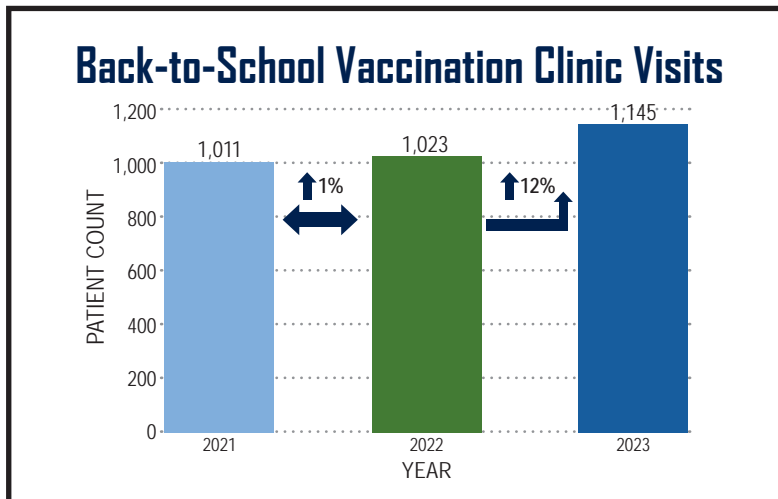
	<b>DTaP, Polio, MMR, Hib, HepB, Var, PCV</b>	<b>DtaP, Polio, MMR, Hib, HepB, Var, PCV, HepA</b>	<b>Tdap, HPV, MCV</b>	<b>Tdap, HPV, MCV</b>
	<b>19-47 months</b>	<b>4-10 years</b>	<b>11-13 years</b>	<b>14-18 years</b>
<b>JCDH Patients</b>	80%	75%	39%	18%
<b>Jefferson County</b>	66%	68%	21%	33%
<b>Alabama</b>	67%	66%	18%	26%

Abbreviations: DtaP = diphtheria, tetanus, acellular pertussis vaccine; Polio = poliovirus vaccine; MMR = measles, mumps, rubella vaccine; Hib = Haemophilus influenzae type b vaccine; HepB = hepatitis B vaccine; Var = varicella vaccine; PCV = Pneumococcal conjugate vaccine; HepA = hepatitis A vaccine; Tdap = tetanus, diphtheria, acellular pertussis vaccine; HPV = human papilloma virus vaccine; MCV = meningococcal vaccine

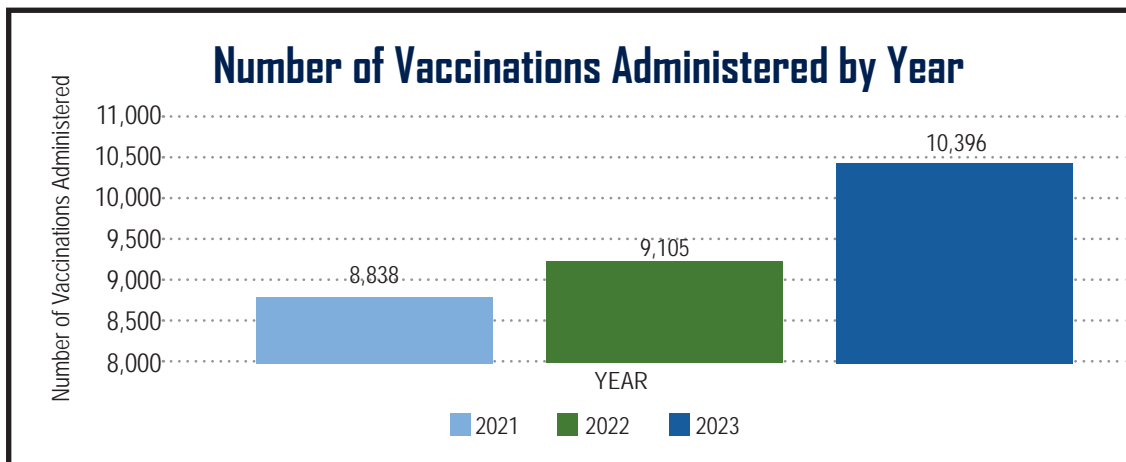
\*ADPH. Immunization Patient Resources with Integrated Technology (ImmPRINT).2018; <https://siis.state.al.us/ImmPrint/login/login.aspx>. Accessed 11/7/2023.

education on childhood vaccination and the benefits of obtaining vaccines earlier for the upcoming school year. Internal processes were improved, including the ability to schedule online appointments and the creation of two new email addresses for requesting vaccination records. Between June and mid-August 2023, JCDH staff received emailed requests for vaccination records from 326 individuals. As childhood vaccines are not the only requirement for school entry, Vital Records experienced a surge in birth certificate requests earlier in the year with a 9% increase in June, 10% increase in July, and a 9% decrease in August 2023 from the previous year.

From July 24 through August 16, 2023, JCDH hosted Back-to-School Vaccination Clinics at the Guy M. Tate Building. Extended clinic hours were held on Thursdays, and a Saturday clinic was conducted on August 5, 2023. Due to increased requests for appointments on August 5<sup>th</sup>, additional staff were on-site, and over 50 children received vaccinations.



JCDH’s efforts to educate the public regarding vaccines and encourage parents to get children vaccinated before the traditional vaccination rush time was successful. The number of individuals presenting to JCDH clinics Monday through Friday during the three weeks around the start of school was consistent with the number of individuals presenting in 2022 (no significant increase). However, the total number of vaccines given in 2023 increased significantly compared to 2022. The increased number of vaccinations benefitted Jefferson County by decreasing the rates of vaccine-preventable illnesses.



Throughout the planning and operational periods, the Vaccination Planning Team collected and analyzed data to determine if implementation of a specific activity resulted in an increased number of requests for vaccination records or clinic visits for vaccination. Best practices identified in 2023 will be repeated in 2024 and identified areas for improvement addressed.



# Clinical Services

**The Clinical Services Division of the Jefferson County Department of Health (JCDH) includes Child Health, Dental Health, Family Planning, Laboratory Services, Pharmacy Services, Public Health Language Services, Social Services, and the Women, Infants, and Children (WIC) Special Supplemental Nutrition Program.**

## Child Health

In 2023, the Child Health Program expanded Reach Out and Read within JCDH Health Centers. Reach Out and Read, a family-centered program offered across the U.S., provides guidance to parents/caregivers about the benefits of reading aloud to children. Research shows singing, talking, and reading to children enhances emotional connection, healthy social-emotional development, and can lessen the impact of adverse childhood experiences on long-term health outcomes.

The Child Health Program received hundreds of gently used book donations which were then provided to parents and children during well-child visits.

Child Health expanded its testing repertoire and began conducting patient hearing screening using portable handheld audiometers that reduce visit time compared to visits with traditional screening in a hearing booth.

To reduce the risk of infection with respiratory syncytial virus (RSV), the Child Health Program began offering Beyfortus®, a monoclonal antibody, in October 2023 for infants younger than eight months of age entering their first RSV season or going into their second RSV season.

A nurse practitioner joined Child Health in 2023 expanding access to pediatric care. In 2023, the Child Health Program provided 32,356 clinical visits serving 12,079 patients.



## Dental Health



Despite ongoing post-COVID-19 staffing shortages common in other health care organizations, JCDH Dental Clinics served more than 4,500 patients and rendered services through over 9,300 clinical visits during 2023.

JCDH Dental Health participated in community outreach events in 2023 that included the Alpha Phi Chapter of Omega Psi Phi Fraternity's Health Fair, Fiesta, and Center Point Hispanic Church's Health Fair. Staff provided

# Clinical Services

education on oral hygiene, nutritional choices, the importance of regular dental visits, and information about JCDH Dental Clinics during these outreach events.

More than 1,000 dental screenings were provided for Birmingham City Schools' Early Learning Program and Jefferson County Child Development Council's Kindergarten Program participants. This outreach enabled students to interact with health workers in the community setting while receiving oral health assessments to identify and address dental health needs.

## Family Planning

In 2023, JCDH Family Planning (FP) Clinics provided care for 5,795 patients and completed over 10,500 patient care encounters. Staff in FP completed continuing education on sexually transmitted infections and contraceptives. Additional JCDH nurse practitioners received training on intrauterine device (IUD) placement, expanding access to this contraceptive method for patients. Six FP providers completed the American Society for Colposcopy and Cervical Pathology Colposcopy Course during the year in preparation for JCDH's 2024 launch of colposcopy services. A project funded by the Alabama Department of Public Health (ADPH) provided human papilloma virus (HPV) vaccine for administration at no cost to eligible patients starting in August 2023 and resulted in the delivery of over 190 vaccine doses. The FP Clinic continued to administer the remaining HPV vaccine doses throughout the year. Appointment self-scheduling for FP Clinics is ongoing and has become a popular option for patients.

In February 2022, JCDH received a Title X Dire Needs grant in the amount of \$1.499 million dollars. This grant enabled expanded access to FP services via mobile FP services, telehealth, a teen clinic, and provision of FP services to men. JCDH's Mobile Health Services Clinic completed 114 deployments in 2023, including those to Fiesta, Mi Pueblo, Foundry Ministries, and multiple Housing Authority of the Birmingham District locations. In November 2023, JCDH received a new mobile unit designed by JCDH staff with exam space to further expand access to services. The multiple partnerships JCDH created in 2023 will support recurring community presence for the Mobile Health Services Clinic in 2024.



## Laboratory Services

Laboratory Services support clinic operations at JCDH. Family Planning expanded testing to include HPV genotyping.

JCDH laboratories had no deficiencies from Clinical Laboratory Amendments (CLIA) for the 2023 inspection year and received clearance to provide moderately complex lab testing until 2025. During 2023, the Alabama Department of Public Health (ADPH) revised its requirements for submitting laboratory samples; as a result, JCDH adopted a new method of shipping specimens to ADPH.





# Clinical Services

## Language Services

Language Services provided language access during 80,616 clinical encounters across the three JCDH Health Centers and the Call Center during 2023. Services were provided in an array of languages including Spanish, K'iche, Vietnamese, Arabic, Russian, Portuguese, Luganda, Mandarin, Cantonese, Korean, French, Akatek, Kanjobal, Haitian Creole, Swahili, Pohnpeian, Turkish, Bengali, Burmese, Kinyarwanda, Hindi, Fulani, Ukrainian, Sudanese, Thai, Dari, and Karen to improve patient care. Providing educational material in the language of need continued to be prioritized with 168 documents translated. Language Services encouraged JCDH staff to communicate in the patient or client's language of choice. In addition to interpretation provided using JCDH interpreters, Language Services coordinated access to sign language and additional language interpretation through a language service line. During the year, the 2,904 interpretations conducted through the language line represented 28 unique languages, including American Sign Language (ASL).

Public Health Language Workers (PHLWs) assisted with community outreach and education by providing language access, walking through trailer parks encouraging the Limited English Proficiency (LEP) community to receive vaccinations, and posting flyers on vaccination opportunities across Jefferson County. PHLWs actively engaged in HPV outreach to the international community needing language assistance by calling, informing, connecting clients with nurses to answer questions, and collaborating with community leaders to create a communication bridge. In addition, PHLWs provided language access and supportive services on JCDH's Mobile Health Services Clinic.

Language Services worked with other JCDH programs to implement a new back-to-school vaccination program, "Crush the Rush." Vaccine records from countries outside the U.S. were translated into English, and staff worked rigorously to bring awareness to the international community of the need to complete childhood vaccinations prior to the start of the school year.

As opioid abuse remains a significant health issue, PHLWs provided language access and community education, including Narcan® (naloxone) training, in collaboration with JCDH's Substance Abuse Team for the county's Hispanic population.

For the ninth year, Language Services coordinated JCDH's participation in Fiesta, the largest Latin festival in the southeast. Language Services offered Narcan® (naloxone) training and sexual health information during the event.

## Pharmacy Services

The Pharmacy Program works closely with JCDH's Clinical Services and Specialty Clinics by maintaining and monitoring medication and vaccine inventory. The program ensures compliance with federal medication and vaccine delivery programs, such as Vaccines for Children (VFC) and 340B (drug pricing program), while aligning with other areas of JCDH to coordinate Narcan® (naloxone) distribution, COVID-19 vaccine storage and distribution, and mpox treatment and vaccine management, among others.

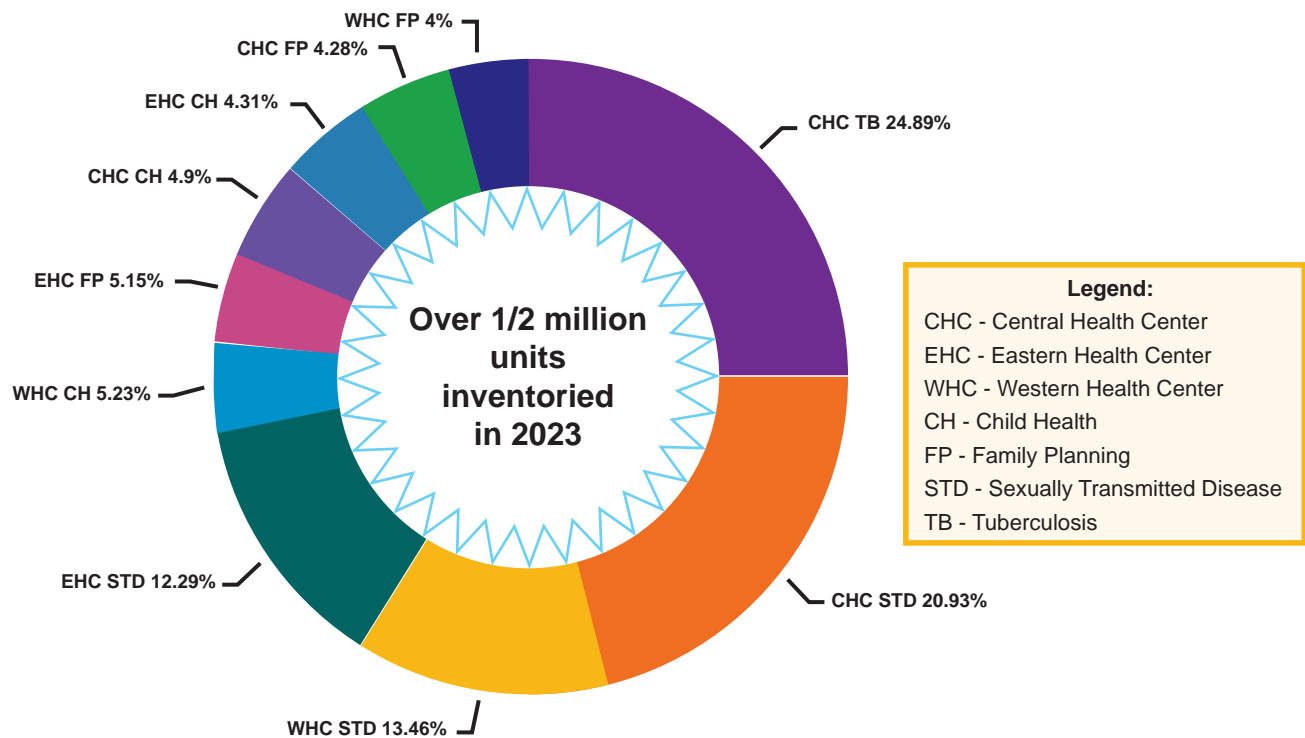
During 2023, the Pharmacy staff inventoried over 505,000 units of medication to ensure compliance, maintain supply, and collect data for presentation to JCDH's 340B Oversight Committee.

Pharmacy staff helped distribute almost 1,400 units of Narcan® (naloxone) to UAB facilities and 13 pharmacies in Jefferson County.

# Clinical Services

Pharmacy staff collaborated within JCDH to establish new protocols and procedures for effective medication and vaccine delivery. Examples of these multi-departmental initiatives included establishing a Pharmacy and Therapeutics Committee, planning the delivery of back-to-school vaccines, and staff training on novel medications and vaccines.

## 2023 Percent of Medications Inventoried by Site and Program



## Social Services

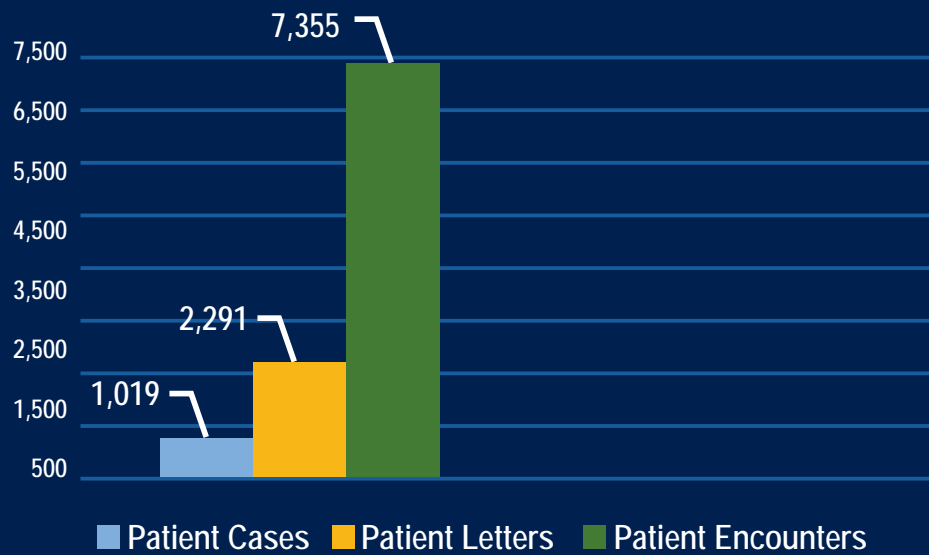
The Social Services (SS) program consists of a team of licensed social workers and registered nurses using patient-centered strategies and compassionate care to assist individuals, families, and communities.

Case management and care coordination services include psychosocial assessments, appointment setting, breast and cervical cancer screening program enrollment, health education, management of chronically missed appointments, home visits, monitoring of metabolic disorders, medication assistance, care planning, disease prevention, system navigation, and crisis intervention. A snapshot of the number of patient interactions provided by SS is presented in the following chart:



# Clinical Services

## 2023 Social Services' Patient Interactions



- Patient cases document conversations and support
- Patient letters encourage adherence to provider recommendations
- Patient encounters capture interactions by phone, in the home, and in the clinic

Social Services staff collaborated with the Family Planning, Dental Health, The Supplemental Nutrition Program for Women, Infants, and Children (WIC), Child Health, Population Health, and Sexual Health Programs at JCDH. With an emphasis on equitable health care access, SS partnered with community-based organizations on outreach activities, workforce development, resource referrals, education, and patient advocacy.

# Clinical Services

In 2023, Social Services staff completed the following:

**Sexual Health: 386 active patients for nPEP, PrEP, and Hepatitis C Programs**

**Child Health: 309 patients referred through the electronic medical record**

**Alabama Department of Public Health: 107 referrals for newborn hearing screening, newborn metabolic screening, and child lead poisoning**

**Family Planning: 776 social determinants of health leads from August to December 2023**

**Dental Health: 60 referrals for specialty care, education, and follow-up**

## ***The Special Supplemental Program for Women, Infants, and Children (WIC)***

Special Supplemental Program for Women, Infants, and Children (WIC) services are provided at the three Jefferson County Health Department Health Centers. WIC services include nutrition education, breastfeeding support, healthy foods, and referral to additional health-related services. In Fiscal Year 2023, the average caseload for JCDH WIC was 12,575 clients.

As JCDH clinical operations returned to pre-pandemic procedures, WIC certifications are again conducted in-person. This enables Nutritionist Consultants to complete more accurate nutrition assessments and tailor counseling for WIC participants. Most WIC follow-up appointments, however, are conducted remotely.



# Clinical Services

The infant formula shortage continued into 2023, and the U.S. Department of Agriculture (USDA) extended Formula Purchasing Waivers allowing off-contract formulas and alternate sizes of containers to be purchased. These waivers remained in effect until May 31, 2023, with selected extensions for special formula sizes continued through June 30, 2023.

During the COVID-19 pandemic, WIC food benefits were auto-issued; but, in January 2023, this feature was discontinued. Currently, benefits are manually issued when WIC staff interact with participants during in-person appointments or phone contacts. Until October 1, 2023, after attempting to contact the WIC participant, benefits could be issued when no contact occurred. Effective October 1, 2023, WIC benefits are no longer issued without participant contact.

In 2023, new options were added to the Alabama WIC Approved Foods List. These additions include frozen fruits and vegetables, expanded yogurt varieties, expanded sizes of juices and infant foods, and pouches of tuna and salmon. Average benefit redemption increased in Fiscal Year 2023 to 82%, a four percent increase from Fiscal Year 2022. This increase in benefit redemption may be due to the additional options for food packages or the discontinuation of auto-issuance of benefits.

WIC recognizes breastfeeding as the preferred method of infant feeding. All WIC staff attended breastfeeding training in 2023, and three new Breastfeeding Peer Counselors were hired. These Peer Counselors provide practical breastfeeding support to prenatal and breastfeeding women. Additionally, the Alabama WIC program began offering breastfeeding support for program participants through the Pacify App. This support is offered 24 hours a day, 7 days a week at no cost to the participant.



# Disease Control

**The Disease Control Division's activities prevent or reduce the spread of infectious diseases in Jefferson County. This division consists of the Prevention and Epidemiology and Sexually Transmitted Disease Programs, the Specialty Clinics, and the Tuberculosis Program.**

## *Prevention and Epidemiology*

The Prevention and Epidemiology (P&E) Program investigates notifiable conditions, including vaccine preventable infectious diseases, and outbreaks of any kind. Ongoing partnerships with medical providers, schools, childcare centers, and long-term care facilities are a primary resource for disease mitigation and transmission prevention. Jefferson County, along with the nation, experienced significant disease burden from respiratory illnesses in 2023, including Respiratory Syncytial Virus (RSV), Influenza, and COVID-19. To better understand this disease burden, P&E collaborated with local sentinel providers (medical offices and emergency care providers) to collect influenza-like-illness (ILI) data monitoring respiratory illness activity.

P&E continues to lead Jefferson County's COVID-19 case and outbreak investigations. P&E investigated 655 reports of notifiable diseases (excluding COVID-19), 76 illness complaints/reports, and 16 disease outbreaks. With support from JCDH's Clinical Services Division and the Response Team, P&E conducted community-based vaccination clinics in response to Hepatitis A and Streptococcus Pneumoniae exposures. Handwashing education and other disease prevention strategies provided during 15 community events that engaged 2,265 individuals enabled community members to reduce the risk of illness.

These community events included National HIV Testing Day, health fairs, careers expositions, and disease prevention presentations. In addition, P&E coordinated a panel discussion on disease control-related career opportunities at JCDH with students at the University of Alabama at Birmingham School of Public Health.

As part of JCDH's mission to prevent and mitigate public health threats, the P&E Program delivered Detect, Test, and Report (DTR) training throughout Jefferson County. These trainings emphasized the disease control actions mandatory reporters must complete to reduce the impact of Alabama's reportable diseases. The 15 DTR training



HIV Testing Day

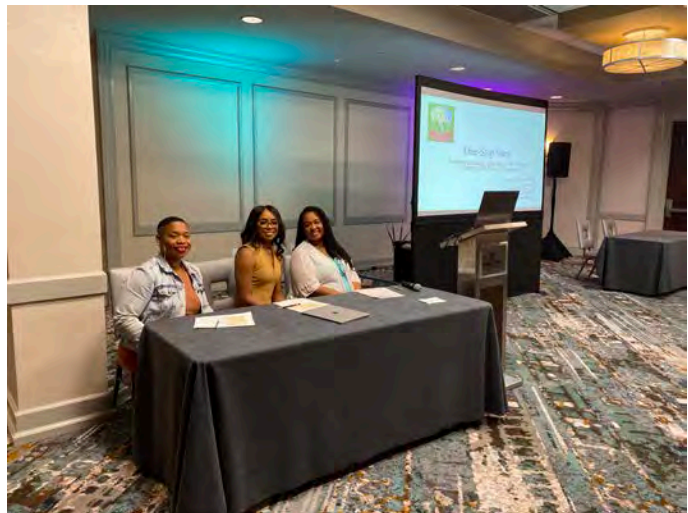


# Disease Control

courses presented during 2023 reached 125 mandatory reporters and community members.

P&E provided continuing education and training to its staff in collaboration with the Alabama Department of Public Health and through participation in national enrichment opportunities provided by the American Public Health Association, Association for Professionals in Infection Control and Epidemiology, and the Council of State and Territorial Epidemiologists.

## Sexual Transmitted Disease (STD) Program



PrEP Presentation

The STD Program's activities include entry of information into state and local surveillance data systems, sexually transmitted infection (STI) screening, disease intervention through investigations and linkage to care, patient interviews and partner notification, community engagement, and education on HIV Pre-exposure Prophylaxis (PrEP) and Post Exposure Prophylaxis (PEP). The STD Program led mpox case investigations and education in Jefferson County.

Jefferson County experienced an increased number of pregnant persons infected with syphilis in 2023. Among the 22 pregnant females diagnosed with syphilis, 19 were treated, resulting in prevention of 86% of the potential congenital syphilis cases.

The STD Program's collaboration with academic institutions and community partners resulted in increased disease screenings and enhanced JCDH's community presence. STI screenings were held at Miles College and UAB, and for the UAB Equal Access Indigent Women's Care Initiative.

The STD Program's impact in 2023 included:

- Over 4,900 individuals receiving sexual health education during community events
- Contact with 4,209 persons diagnosed with a Sexually Transmitted Infection (STI)
- 2,500 Fast Track Sexually Transmitted Infection (STI) screening visits
- Interviews of 644 persons diagnosed with syphilis
- Education and counseling on PrEP or PEP for 185 persons
- Over 80 individuals assisted with PrEP initiation
- 77 persons newly diagnosed with HIV received care referral.

# Disease Control

## Specialty Clinics



Educating the community on STIs

The Specialty Clinics provide evaluation, diagnosis, and treatment of sexually transmitted infections (STIs) and tuberculosis (TB). The Specialty Clinics also evaluate individuals regarding travel-related disease control needs and provide travel-related vaccinations. TB screening and adult immunizations are provided, as well as religious exemption for immunizations in school-age children. Additional services include HIV pre- and post-exposure prophylaxis (PrEP and PEP), Hepatitis C evaluation and treatment, and evaluation, vaccination, and treatment for mpox. During 2023, JCDH Specialty Clinics provided services to 16,146 patients.

The three locations of JCDH's Sexual Health Clinic served 10,910 unique patients during 2023. To increase access to sexual health services, the Sexual Health Clinic at Eastern Health Center operates three days per week, and the Sexual Health Clinics at Central and Western Health Centers operate five days per week. During 2023, 63 individuals were seen for PrEP, and 53 individuals were evaluated for Hepatitis C infection and treatment. The Sexual Health Clinic, in collaboration with the JCDH Sexually Transmitted Disease Program, offered Fast Track appointments. Fast Track appointments provide easy access to comprehensive STI testing for individuals who are not experiencing active STI symptoms. In 2023, the STD Program and Specialty Clinics conducted 2,115 Fast Track STI screening visits, a 13% increase from 2022. In April 2023, the Sexual Health Clinic launched a Fast Track self-scheduling platform, and approximately 20% of appointments were self-scheduled online.

The Tuberculosis Clinic evaluated and/or treated 2,607 patients during 2023. There were 2,629 visits to the Community Service Clinic and 557 visits to the Travel Clinic.

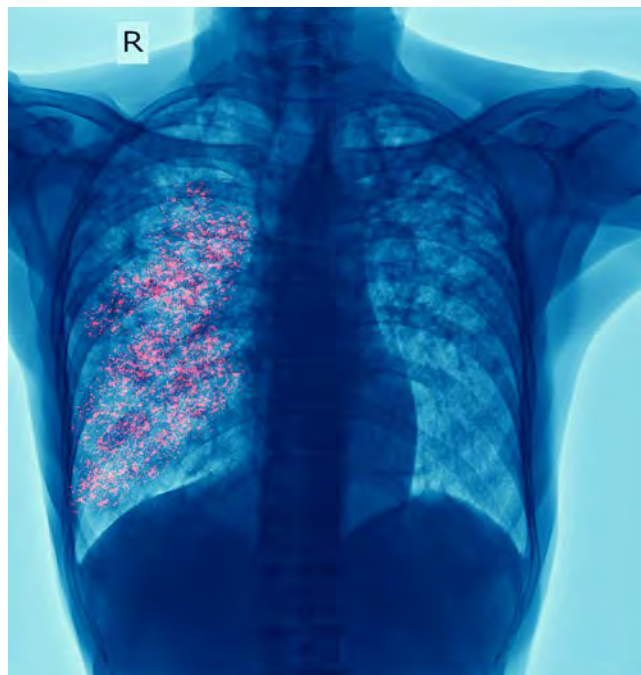
# Disease Control

## ***Tuberculosis (TB) Program***

The TB Program provides services to prevent and treat TB. The TB Program reduces the burden of TB through education, evaluation, and therapy for Jefferson County residents with suspected or confirmed active TB or latent TB infection. Persons with active and suspected TB are directly observed to ensure completion of the prescribed course of therapy and reduce the risk of drug resistance.

The decrease in active TB cases observed in 2023 closely mirrored case declines during 2020 and 2022. These case reductions suggest a new and lower baseline of overall disease prevalence. Among the 2023 TB cases were medically complex patients, persons in hospice care, and others requiring hospitalization during treatment.

During 2023, the TB Program followed 11 active TB cases. A contact investigation was initiated for each active TB case to identify, evaluate, and treat exposed individuals and prevent the spread of the disease. However, due to the higher number of extra-pulmonary TB cases, the 36 screening evaluations for persons exposed to active TB were lower than during past years.





# Environmental Health

**The Jefferson County Department of Health (JCDH) Environmental Health Services Division includes the Air and Radiation Protection, Community Assessment, Community Environmental Protection, Emergency Preparedness and Response, and Food and Lodging Protection subdivisions.**

## Air and Radiation Protection

The Air and Radiation Protection subdivision includes the Air Pollution Control, Air Monitoring, and Radiological Health Programs. The Air Pollution Control Program regulates sources of air pollution encompassing industrial sources. Area sources of pollution include gasoline stations and tanker trucks, dry cleaners, open burning, and asbestos demolition and renovation activities.

The Air Monitoring Program operates a complex network of air monitoring stations located throughout Jefferson County to assess ambient air quality. Data from these monitors are used to determine compliance with the Environmental Protection Agency's National Ambient Air Quality Standards for criteria pollutants.

The Radiological Health Program evaluates equipment and operating procedures of x-ray and tanning facilities throughout the county. Assuring compliance with regulations provides protection against accidental harmful exposures during medical x-rays and tanning salon visits.

The Air and Radiation Protection subdivision issues daily air quality forecasts for the Birmingham area based on the Air Quality Index (AQI), a color-coded scale showing the level of air pollution and its associated health effects. Fine particle (PM<sub>2.5</sub>) pollution forecasts are provided by JCDH year-round; the Alabama Department of Environmental Management forecasts ozone (O<sub>3</sub>) levels during the warm season. An "Air Quality Alert" is issued when the AQI is

### AQI BASICS FOR OZONE AND PARTICLE POLLUTION

Daily AQI Color	Levels of Concern	Values of Index	Description of Air Quality
Green	Good	0 to 50	Air quality is satisfactory, and air pollution poses little or no risk.
Yellow	Moderate	51 to 100	Air quality is acceptable. However, there may be a risk for some people, particularly those who are unusually sensitive to air pollution.
Orange	Unhealthy for Sensitive Groups	101 to 150	Members of sensitive groups may experience health effects. The general public is less likely to be affected.
Red	Unhealthy	151 to 200	Some members of the general public may experience health effects; members of sensitive groups may experience more serious health effects.
Purple	Very Unhealthy	201 to 300	Health Alert: The risk of health effects is increased for everyone.
Maroon	Hazardous	301 and higher	Health warning of emergency conditions: Everyone is more likely to be affected.

# Environmental Health

expected to be above 100. On “Air Quality Alert” days, the public is encouraged to reduce driving, limit engine idling, refuel vehicles after dusk, and conserve energy.

During 2023, Air and Radiation Protection conducted 123 industrial facility inspections and initiated four industrial, five asbestos, and thirteen open burning enforcement actions. Staff conducted 503 x-ray facility inspections and 33 tanning facility inspections.

## Community Environmental Protection

Sections of the Community Environmental Protection (CEP) subdivision include Onsite Sewage, Public Swimming Pool, Community Sanitation, Rabies Control, Vector Control, Body Art, and Watershed Protection. Each section completes inspections, conducts investigations, and provides education on environmental health issues affecting the residents of Jefferson County.

Investigation of environmental concerns and inspection of select facilities allows JCDH to monitor compliance with regulations; however, education is a proactive means of preventing health concerns and improving environmental health conditions. CEP conducted a certification course for community pool/spa operators with all participants receiving certification. The Watershed Protection Program provided community education through pamphlets entitled, “How to Keep Our Water Clean,” “Protecting Streams and Storm Drains from Pet Waste Pollution,” and “Proper Disposal of Pesticides.”

JCDH and the Valley Creek Cleanup Committee held the 13<sup>th</sup> Annual Cleanup on the Valley Creek Watershed on Thursday, August 10 and Saturday, August 12, 2023. Over 2.82 tons of trash and debris were removed from the watershed by JCDH staff and 365 volunteers during this event.

JCDH, the Storm Water Management Authority, Inc., and the City of Bessemer and Jefferson County stormwater programs conducted a Household Hazardous Waste Collection Day on April 29, 2023. JCDH staff and 85 volunteers received 257,484 pounds of waste from 1,537 participants.



18<sup>th</sup> Annual Cleanup on the Valley Creek Watershed



# Environmental Health



2023 Household Hazardous Waste Collection Day

## COMMUNITY ENVIRONMENTAL PERMITS

TYPE	NUMBER
Mobile Home Park	50
Body Art Facility	48
Solid Waste Transfer Station	2



# Environmental Health

## INSPECTIONS

TYPE	NUMBER
Onsite Sewage Disposal	2,175
Pool/Spa	1,878
Industrial Stormwater Runoff	278
Garbage Hauler	238
Mobile Home Park	100
Stormwater Samples	95
Solid Waste Facility	15
Transfer Station	2

## COMPLAINTS

TYPE	NUMBER
Sanitation	738
Animal Exposure	713
Onsite Sewage Disposal	308
Water Quality	160

## Emergency Preparedness

The Emergency Preparedness and Response subdivision (EP) employs an “all hazards” approach focused on continual preparedness and response activities for limiting the impacts of any public health emergency in Jefferson County. Planning, exercising, and training are performed continuously throughout the year to maintain readiness. On July 20, 2023, the EP staff participated in a Full-Scale Exercise (FSE) at Jefferson County’s Regional Distribution Site in collaboration with the Jefferson County Emergency Management Agency and the Alabama Department of Health. This exercise tested personal protective equipment for first responders from the Strategic National Stockpile (SNS). The SNS supports state, local, tribal, and territorial responders in effective response during an emergency where stockpiled items are deployed. JCDH also participated with multiple jurisdictions and health care districts in the Norfolk Railroad FSE and Alabama Fire College FSE which utilized the Alabama Mutual Aid System and Incident Management Team. JCDH applied lessons learned from these training exercises to identify gaps and areas of concern. These experiences support improvement and best practices for managing future incidents.

The Jefferson County Healthcare Coalition’s Twisted Sisters Medical Response & Surge Exercise conducted April 20, 2023, assessed the county’s ability to manage a large-scale medical surge involving severe weather. Participants discussed the roles and responsibilities of their respective organizations as a simulated violent squall line of storms moved rapidly through northern and central Alabama. Activities of the Jefferson County Healthcare Coalition, coordinated through the EP subdivision, focus on improving response capabilities of the Jefferson County health care system.

# Environmental Health

## Food & Lodging Protection

The Food and Lodging Protection (FLP) subdivision of Environmental Health Services regulates food establishments and manufacturers including temporary food service events such as camps, summer food service programs, and festivals. Additionally, FLP regulates hotels and motels, communal living facilities, and childcare centers. FLP permits, inspects, investigates complaints, and provides enforcement actions for these industries. Guidance is provided on sanitary operations and compliance with respective regulations. Food safety information is offered to community members to protect health.

The annual Magic City Classic is one of the largest temporary food service events in Jefferson County. Due to the event's public health implications, FLP implemented a coordinated plan to address food safety. A meeting for business owners, merchandise vendors, and food service providers around Legion Field where the Magic City Classic is held provided information on food service operation rules and requirements during a temporary event. In the weeks leading up to and during the Magic City Classic, FLP teams issued 32 temporary permits to food vendors and five temporary food permit exemptions along with providing food safety education and guidance. These efforts increased the number of regulated food vendors and decreased illegal food vendors during the Magic City Classic in 2023.

The FLP Food Safety Training Program provides food safety education for food handlers and food service managers. The demonstration of food safety knowledge through the presence of a Certified Food Safety Manager (CFSM) and sufficiently trained food handlers in a food establishment serves to assure the public of the entity's proper food safety practices. Jefferson County is one of only two Alabama counties with local regulations requiring food handlers working in a regulated food establishment to complete a basic food safety training course. In 2023, FLP resumed its in-person sessions of the JCDH Food Handler Training Course, which is offered in multiple languages, and the ServSafe Certified Food Safety Managers Course. Online courses remain available. FLP continues to promote and

enhance food safety education and awareness through updated course materials and during community events.



Food Safety Training Satellite Class - City of Birmingham Schools

# Environmental Health

2023 FOOD AND LODGING PROTECTION OPERATIONAL DATA	
FOOD PERMITS/ESTABLISHMENTS BY TYPE	NUMBER
Food Service Establishment	1,809
Limited Food Service	872
Limited Retail Food Store	313
Mobile Food Vendor	283
Temporary Food Service Vendor	269
Childcare Center (food permit)	224
Retail Food Store	211
Bar and Lounge	185
Public School Lunchroom	162
Ballpark Concession Stand	142
Food Processor	84
Nursing Home Kitchen	52
Elder Feeding Site	29
Private School Lunchroom	27
Other Institutional Kitchen	17
Hospital Kitchen	16
Charitable Non-permitted Food Establishment	10
Jail and Prison Food Service	5
Summer Feeding Site	2
<b>Total Permitted (Food)</b>	<b>4,712</b>
OTHER FACILITY PERMITS BY TYPE	
Childcare	284
Hotel/Motel	129
Communal Living	41
Camp	33
<b>Other Facilities Total</b>	<b>487</b>
<b>Total Permitted Facilities</b>	<b>5,199</b>



# Environmental Health

INSPECTIONS	
	NUMBER
Food	11,876
Childcare	358
Lodging (hotel/motel)	79
Communal Living	41
Camp	4
<b>Total All Inspections</b>	<b>12,358</b>

OTHER SERVICES	
	NUMBER
Temporary Food Events	89

COMPLAINT MANAGEMENT	
<b>Total Complaints</b>	390
<b>Total Complaint Investigations</b>	627

FOOD SAFETY EDUCATION	
FOOD HANDLER TRAINING	NUMBER
Online Learners	9,925
Classroom (on-site) Learners *Classes at JCDH resumed in June 2023	218
Satellite (off-site) Learners	5
CERTIFIED MANAGER TRAINING	NUMBER
Certified Manager Learners	21
Certified Manager Certificates	14
Certified Manager Class in November 2023	1
<b>Total Number of Learners Trained</b>	<b>10,218</b>

# Finance and Administration

**The Finance and Administration Division of the Jefferson County Department of Health (JCDH) includes Accounting, Central Billing Office, General Services, Human Resources, Management Information Systems, Public Relations, and Vital Records.**

## Central Billing Office

The Central Billing Office (CBO) is responsible for medical and dental billing for 11 JCDH locations and credentialing providers with payers for billing purposes. The staff manage billing-related calls from patients and JCDH employees. CBO advises staff regarding payer requirements related to capturing insurance information, coding, and the patient checkout process. In addition, CBO assists with special billing projects.

The Central Billing Office is currently partnering to develop benchmarks for its billing staff, provide clear and precise job duties, and assist with bridging the gaps between CBO and Clinical Services.

## General Services

The General Services subdivision of Finance and Administration provides facilities management for 16 JCDH properties including renovation, remodeling, maintenance, custodial services, overall safety and security, landscaping, and upkeep of grounds. General Services also includes the operations and activities of the Print Shop and Record Management.

Key projects initiated or completed in 2023 include:

- Execution of a contract with Taylor & Miree Construction for the Annex Pavilion Project in January 2023. This construction project, providing physical resources to assist JCDH address public health issues, is scheduled to be completed by February 2024.
- Renovation of the Annex Building was completed by Taylor & Miree Construction in July 2023.
- Implementation of a system for efficient management of meeting spaces and events, the EMS Web App, in December 2023.

## Human Resources

During 2023, 71 employees and 19 interns were hired and onboarded by the Human Resources subdivision. Nine retirement applications were processed.

JCDH's Annual Employee Team Building Experience, held in October 2023, promoted employee cross-collaboration and team building. Employees participated in training related to addressing conflict and managing difficult conversations. Employees also engaged in team building exercises. Additionally, all employees participated in annual compliance and privacy training during 2023.

In support of JCDH's mission to promote a healthy lifestyle and a healthy environment, the Human Resources subdivision ensures employees have access to excellent health and wellness benefits. Enhancements to the JCDH benefits package included paid parental leave, a company-funded Health Reimbursement Account (HRA), and company-paid short-term disability insurance.

# Finance and Administration

The Risk Management sub-unit of the Human Resources subdivision continuously considers the safety of JCDH staff, patients, clients, and partners. Risk Management conducted evacuation drills and assisted in the development of a protocol for clients and patients with service animals.

## Management Information Services (MIS)

Several technological infrastructure transitions occurred at JCDH during 2023. The MIS subdivision oversaw major upgrades related to printers and copiers, internet service provision, and the organization-wide transition to Microsoft Office 365®.

With new Overdose Data to Action (OD2A) funding, the MIS team expanded its “near” real-time opioid overdose rapid response platform from local coverage to become a state-wide platform. The MIS Data Team continued to train JCDH departments on Microsoft Power BI dashboards. The MIS Development Team brought new iOS applications online with plans for mass distribution to JCDH mobile devices in 2024.

## Public Relations

JCDH’s Public Relations (PR) subdivision facilitates JCDH’s internal and external communications, digital media presence, and reputational management. Public Relations staff serve as a clearing house for JCDH divisions and support communication initiatives associated with community, governmental, and other partner agencies.

PR assisted with producing the JCDH new strategic plan, the 2022 JCDH Annual Report, special events, graphics for the new mobile health services unit, organizational branding, and fielded hundreds of media requests throughout the year. The overwhelming majority of interview requests during 2023 centered on the Overdose to Action Program (OD2A) and the groundbreaking distribution of Narcan® (naloxone), the drug effective in reversing overdose emergencies.

The Jefferson County community relies on various communication platforms to access public health content. JCDH has nearly 20,000 Facebook followers and more than 2,200 Twitter followers. JCDH focused on continued growth of its digital space during 2023 as society continues to become more digitally driven.

## Vital Records

Vital Records, a Finance and Administration subdivision, issued 97,173 birth, death, marriage, or divorce certificates in 2023.

VITAL RECORD CERTIFICATES ISSUED IN 2023	
CERTIFICATE TYPE	NUMBER OF ISSUED CERTIFICATES
Death	58,613
Birth	35,799
Marriage	2,428
Divorce	333



# Health Equity and Population Health

**The Health Equity and Population Health Division addresses select prevalent and high-impact health problems in Jefferson County to improve health equity.**

In August 2023, work was completed on the Overdose Data to Action (OD2A) grant. Through the four years of allocated OD2A funding, the Jefferson County Department of Health (JCDH) received \$2.48 million to combat the overdose crisis. In 2023, JCDH continued provision of an online platform for naloxone training facilitating statewide mail-order delivery of Narcan® (naloxone) in partnership with the Alabama Department of Mental Health and the Alabama Department of Public Health (ADPH). JCDH distributed 16,810 Narcan® kits (33,620 doses of naloxone) during the year, doubling JCDH's 2022 Narcan® distribution. JCDH trained 9,033 individuals on the use of fentanyl test strips and distributed over 45,000 fentanyl test strips by mail throughout Alabama. The OD2A Team continues extensive community involvement by providing Narcan® use training at community events alongside multiple partners. The Regional Overdose Task Force led by JCDH meets monthly to identify and refine strategies for addressing the overdose epidemic.



Opioid Overdose Rescue Kit

The Health Equity and Population Health Division launched the Alabama Health Professionals Opioid and Pain Management Education (ALAHOPE) online curriculum ([www.alahope.org](http://www.alahope.org)) in May 2023; ALAHOPE provides free continuing education credit for health care professionals on topics related to substance use. More than 990 courses were completed via ALAHOPE in 2023. ALAHOPE's educational offerings will expand during 2024.

In August 2023, JCDH was announced as one of 40 local health departments nationally receiving the OD2A-LOCAL grant. This new grant provides \$1,557,500 annually for five years to further address the county's overdose crisis. JCDH will continue to partner with ADPH on the OD2A-STATE grant to bring additional federal funding and resources into Jefferson County.

Work on the National Association of County and City Health Officials (NACCHO) grant, Implementing Overdose Prevention Strategies at the Local Level (IOPSLL), was completed in July 2023. JCDH became one of five local health departments nationally receiving NACCHO's Sustaining Peers in the Emergency Department grant. Funding from the Sustaining Peers in the Emergency Department grant enabled JCDH to continue the work started under IOPSLL of providing access to peer support specialists in local hospital emergency departments.

JCDH continued its partnership with ADPH on a health disparities grant. Projects conducted in 2023 for this grant included monthly Health Equity Lunch and Learn sessions, deployment of Kulture City sensory awareness training and mobile sensory stations in JCDH's health centers, improved website accessibility, and the creation and hiring of a Director of Health Equity position which formally established the JCDH Office of Health Equity.



From Day One (FDO) is JCDH's signature program for improving birth outcomes in Jefferson County by reducing infant and maternal deaths. FDO held a five-year program celebration in January 2023 recognizing partners who provide expert education on pregnancy, breastfeeding, infant and child safety, and dental care for FDO clients and families. Within FDO's first five years of operation, the program enrolled 328 individuals, completed 14,943 client contacts, and directly impacted 1,196 lives. Almost 300 infants were born to FDO clients during the program's first five years. During this time, FDO

# Health Equity and Population Health



From Day One Baby Safety Shower

completed 268,105 community access referrals supporting clients and their offspring, and 212 women graduated from the program.

Eighteen Baby Safety Showers have provided childhood health and safety education and supplies for 239 clients and 161 family members since FDO's inception. FDO's current 93 active clients received over 4,500 contacts during 2023. Client outcomes for 2023 included a 100% smoking cessation rate and an 82% breastfeeding initiation rate. Among the 38 infants born to FDO clients during 2023, more than 90% were up-to-date on vaccinations. Seventy-two FDO clients graduated from the 18-month program in 2023. A total of 535 clients participated in the FDO Program since its inception in February 2018.

Quarterly educational webinars, called Community Conversations, continued during the year for FDO clients. These webinars expanded to include pregnant women enrolled in the Nurse-Family Partnership, Birmingham Healthy Start Plus, and other local programs with a similar mission. The Count-the-Kicks Program, an evidence-based public health campaign teaching expectant parents the method for and importance of counting the baby's kicks daily in the third trimester of pregnancy, continued to be taught and utilized by FDO clients. The four Baby Safety Showers held during 2023 served 25 program participants and 10 family members. FDO's continued partnership with IMPACT Family Counseling provided safe sleep classes three times per month for low-income maternity patients in Jefferson County.

# Health Equity and Population Health

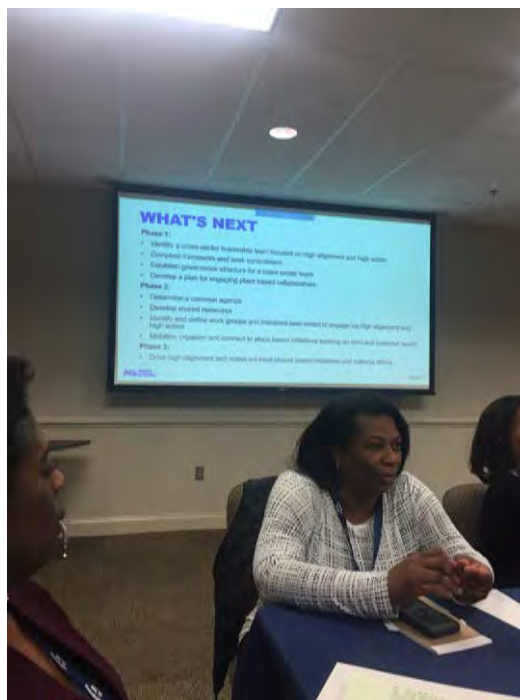
FDO continued to serve as a liaison for navigating maternity programs in Jefferson County. In coordination with the Nurse-Family Partnership, JCDH staff helped assess patient eligibility for supportive programs and navigate referrals.

FDO staff remained actively engaged in local, state, and regional advisory boards and committees supporting maternal and child health. This engagement included a staff member serving as the Jefferson County Maternal and Child Health (MCH) Coordinator to the State MCH Division, and staff serving on Birmingham Women's Initiative Workgroups, the Region IV Infant Mortality Review group, workgroups of the Alabama Opioid and Addiction Council's MCH Sub-committee, the Alabama Coalition of Healthy Mothers and Babies, and the State Perinatal Advisory Committee.

FDO staff offered information on safe sleep, positive parenting, and the FDO program at community events. Outreach events attended included Fiesta, First Baptist Church of Graymont's Health Fair, the National Infant Loss Day Memorial Brunch, Babypolozza, and the Exchange Club's Child Abuse Prevention Center's Child Safety Resource Health Fair.

In 2023, JCDH continued to partner with organizations including Bundles of Hope to fund a new initiative, Diaper Dash, a diaper door delivery service for new mothers. Educational materials on postpartum depression, safe sleep, WIC, and JCDH services are included in the diaper packet. JCDH continued its participation with Birmingham Women's Initiatives (BWI).

JCDH leads the Maternal and Child Health (MCH) Roundtable, a working group of programs, projects, and providers focused on reducing infant mortality in Jefferson County, Alabama. The MCH Roundtable meets for education, networking, and collaboration.



Maternal and Child Health Roundtable



# Quality Improvement and Decision Support

**The Quality Improvement and Decision Support (QIDS) Division provides assessment, planning, and evaluation services for internal and external operations of the Jefferson County Department of Health (JCDH). Additionally, QIDS leads JCDH's quality improvement and performance management programs.**

In 2023, QIDS continued to develop and track, with community agencies, the goals, strategies, tactics, and metrics for the strategic issues within Jefferson County's five-year strategic plan for health, the **Community Health Improvement Plan for Jefferson County, Alabama (CHIP)**. The five strategic issues are:

- Control Gun Violence and Improve Community Safety
- Provide a Timely, Safe, Equitable, and Well-maintained Public Transportation System
- Improve Mental Health Care Access and Utilization
- Decrease Obesity
- Advance Health Equity through Equitable Policies and Access to Resources and Services.

As part of community initiatives to reduce gun violence, QIDS, in collaboration with UAB Hospital's Trauma and Acute Care Surgery Service and the Offender Alumni Association, launched Violence Intervention & Prevention Partners (VIP<sup>2</sup>), the first hospital-linked violence intervention program (HVIP) in Alabama on February 14, 2023. HVIPs are an evidence-based strategy for reducing community violence. These programs use a multi-disciplinary approach to link patients experiencing community violence with community-based resources and intensive trauma-informed case management addressing the underlying risk factors for repeat and retaliatory violence. VIP<sup>2</sup> served 38 individuals between the ages of 16 and 49 years of age during the first ten months of the pilot program. Based on pilot program results, VIP<sup>2</sup> received sustaining funding from the City of Birmingham for the next two years.



To decrease obesity, QIDS staff serving on the Alabama Wellness Alliance supported distribution of the **Alabama Physical Activity and Nutrition Plan** to key organizations, community leaders, and members of the community. The From Day One and Nurse-Family Partnership Programs for high-risk pregnant women, expanded healthy food access,



and availability of Alabama's First Class Pre-K Program advanced health equity through the efforts of CHIP partner organizations. In support of more community-responsive public transportation, QIDS and other local agencies participated in the Birmingham Jefferson County Transit Authority's "Transit on the Grow" initiative to optimize bus routes in Jefferson County and supported the partnership between Lyft and the United Way of Central Alabama that expanded transportation access for Jefferson County residents. Access to mental health services continued to increase through in-person and telehealth services.

The Let's Get Down 35211: A High Blood Pressure Management Program suspended during the COVID-19 pandemic was realigned to provide blood pressure self-monitoring kiosks in three churches and the West End Library within the 35211

# Quality Improvement and Decision Support

ZIP code. The revised program provides residents with the opportunity to track blood pressure readings, receive information on evidence-based lifestyle changes to control high blood pressure, and identify resources for attaining medical care. The program will re-launch in early 2024.

QIDS provided ongoing data support for the Harvard University Center for AIDS Research (CFAR) in predictive modeling to identify JCDH patients at risk of HIV infection, analytic support for the Centers for Disease Control and Prevention's Gonococcal Isolates Surveillance Project, and analysis of the 2023 Household Hazardous Waste Day Survey. Additionally, QIDS assisted in the data collection and analysis required for the Family Planning Annual Report (FPAR 2.0) related to the Title X Family Planning Program.

Quality improvement activities conducted in 2023 included ongoing data analysis to inform improvements in the New Employee Orientation Program and an initiative to increase access to care through self-scheduled appointments in JCDH's Sexual Health Clinic. During 2023, QIDS provided organizational support for conducting and monitoring JCDH's new strategic plan, coordinated with the UAB School of Public Health to provide JCDH leaders with the CDC-developed Evidence-based Public Health Training Course, and launched JCDH's fourth comprehensive community health assessment and improvement planning process.



Public Health Career Day at UAB

# Public Health Advised Fund

**The Jefferson County Department of Health maintains a funding mechanism through the Public Health Advised Fund of the Community Foundation of Greater Birmingham to support community health initiatives in the county.**

During 2023, \$2,982,282 in grant funding was approved and/or distributed for community-based projects led by local organizations including:



- A grant to Brother's Let Talk for providing no-cost mental health counseling for victims of community violence.



- A grant to the Crisis Center for continued operation of the Recovery Resource Center assisting individuals and families impacted by opioid addiction in navigating the substance abuse treatment system.



- A grant to One Place Metro Alabama Family Justice Center for conducting strangulation exams for victims of domestic violence.

- A grant to the City of Warrior supporting a walking track at Warrior Elementary School for use by students and the public.

- A grant to Vax 2 Stop Cancer for dental provider education on the prevention of oral cancers caused by the human papillomavirus (HPV).



- A grant to the YMCA Birmingham for training and certifying lifeguards to promote water safety.



Nurse educating a first-time mother

- A grant to the UAB School of Nursing for continuation of the Nurse-Family Partnership, a nationally recognized home-visiting model for first-time mothers and their children, demonstrated to improve prenatal health, birth outcomes, and child development, as well as reduce childhood adverse events.



# Public Health Advised Fund



- A grant to the Community Care Development Network for providing healthy food for Jefferson County's senior residents through mobile food markets, food hubs, and an e-commerce tool.

- A grant to Bush Hills Connections, Inc., to hire, train, and equip student interns in supporting food access through the Bush Hills Garden and Urban Farm.



- A grant to No More Martyrs providing scholarships to Jefferson County Residents attending the 2023 Mental Health Equity and Liberation Summit.



- A grant to The Flourish Alabama supporting violence reduction in youth through intentional arts education.

- A grant to the Jefferson County Greenways Commission sustaining Jefferson County's regional parks by combining efforts under a single entity.

- A grant to the UAB Comprehensive Addiction in Pregnancy (CAPP) program for providing incentives for healthy behaviors among women with substance abuse disorders.

- A grant to Cawaco Resource Conservation and Development Council to continue Cool Green Trees Birmingham, an initiative addressing climate change through the mitigation of urban heat islands.



- Installment of grant funding to the Hunger Solutions Institute for continuation of the Double Up Food Bucks™ program in Jefferson County. This program matches purchases of fresh fruits and vegetables using Supplemental Nutrition Assistance Program (SNAP) benefits up to \$10 per day at participating grocery stores and \$20 per day at local farmers' markets.

- Third and final installments of grant funding to the Offender Alumni Association for providing the case management component of the hospital-linked violence intervention program, Violence Intervention & Prevention Partners (VIP<sup>2</sup>). This program seeks to reduce gun violence reinjury and retaliation by addressing the social determinants of health.



# Board of Health Actions



Kenny Murray, MD, MPH  
Chair from  
January-June 2023



Iris Fancher, MD, FAAP  
Chair from  
July-December 2023



Jeffrey Dobyns, DO,  
MSHA, MSHQS, FASA  
General Liability Claims  
Committee/Investment  
Committee



Michele Kong, MD, MBA



Elizabeth Turnipseed,  
MD, MSPH, FACP  
Secretary



Commissioner  
Jimmie Stephens

**The Jefferson County Board of Health (Board), the governing body of the Jefferson County Department of Health (JCDH), is comprised of six members: five physicians elected by the Jefferson County Medical Society and the President of the Jefferson County Commission.**

The Board approves JCDH's annual budget and all contracts. The Board is authorized to revise or adopt certain public health regulations, endorse policies and legislation promoting health, and take other actions advancing public health. The Board receives regular updates from the Jefferson County Health Officer, presentations from JCDH staff on programs and quality improvement activities, and occasional presentations from external public health partners. Among the actions of the Board of Health during 2023 were:

## **Transfer of a Portion of Bluestone Coke Civil Penalties to the Sustainable Industrial-Residential Buffers Fund - February 8, 2023**

A resolution authorizing and requesting the Health Officer to comply with the Consent Decree, issued as a result of a Complaint filed by the Board against Bluestone Coke for alleged violations of the Air Pollution Control Act. This resolution is to (1) transfer the required portions of the civil penalty to the Buffers Fund; (2) ensure that the amounts transferred to the Buffers Fund are spent in a manner consistent with the Consent Decree; and (3) ensure that the Health Department will seek public comments and hold a public input session where members of the public can publicly voice their preference for how the funding should be spent.

## **Authorizing the Transfer of Funds to the City of Irondale for the Purpose of Repairing a Walking Track in Irondale, Alabama - March 8, 2023**

A resolution authorizing the Health Officer to evaluate the proposed repairs, enter into a contract with the City of Irondale, and transfer an amount not to exceed \$60,000 to the City of Irondale to repair and enhance the park and outdoor recreation facilities.

# Board of Health Actions

## **Cawaco Resource Conservation and Development Council, Inc., Attorney General Advisory Opinion - September 13, 2023**

A resolution authorizing General Counsel to request that the Attorney General of the State of Alabama issue an advisory opinion as to whether the Board may sign an agreement to donate funds to Cawaco Resources Conservation & Development Council, Inc., and its Cool Green Trees Birmingham program to create and maintain natural buffer zones between active and abandoned industrial sites and adjacent residential neighborhoods.

## **Dedication of the Mark E. Wilson Pavilion - October 23, 2023**

A resolution to name the newly constructed health pavilion the Mark E. Wilson Pavilion to honor Dr. Wilson's service, leadership, and positive contributions during his twelve-year tenure as Health Officer.

## **Adoption of JCDH Code of Ethical Conduct Policy - December 13, 2023**

A resolution to approve and adopt the Code of Ethical Conduct as a policy of JCDH.



Mark E. Wilson Pavilion



# 2023 General Financial Information

## Revenues (General Fund - \$57,584,756)

### ***1. Ad Valorem Tax Revenue - \$8,884,545 (15% of General Fund Revenues)***

Alabama Act 77-231 provides that the County (and municipalities within the County) shall pay to the Board of Health annually a sum not less than 2% or more than 6% of all ad valorem taxes collected within the County excluding ad valorem taxes collected for the State of Alabama and all Boards of Education located in the County. These funds are forwarded to JCDH as the taxes are collected.

### ***2. Sales Tax Revenue - \$28,948,016 (50% of General Fund Revenues)***

JCDH receives approximately one-fifth of every one cent of Jefferson County sales tax.

### ***3. State and Federal Contracts - \$2,133,555 (4% of General Fund Revenues)***

These are primarily dollars received from the Alabama Department of Public Health (ADPH) resulting from contracts or subcontracts to administer selected public health responsibilities for State Public Health Area 4, Jefferson County. Examples include developing community and educational programs and monitoring activity in nationally identified public health focus areas such as Maternal/Child Health, Family Planning, Immunization, Tuberculosis, Sexually Transmitted Disease and Hepatitis.

### ***4. Clinical Health Care Revenue - \$9,110,817 (16 % of General Fund Revenues)***

This category represents the amount of reimbursement received for all clinic-related services provided by JCDH. These services include pediatric primary care, family planning and dental care. Using the Federal

Poverty Guidelines, JCDH offers reduced service fees for patients meeting financial and residential guidelines. Approximately 91% of JCDH's reimbursement is obtained from Medicaid, 4% from Blue Cross, and the remaining 5% from all other payers combined (e.g., Medicare, etc.).

### ***5. Environmental Health Services - \$4,058,225 (7% of General Fund Revenues)***

This category represents reimbursement received locally for environmental health services. State law allows fees to be charged for many of the services provided by the Environmental Health Division such as restaurant inspections, septic system plans and inspections, air pollution permit fees, open burning permits, radiological equipment inspections, and food handler training.

### ***6. Other Revenue - \$4,449,598 (8% of General Fund Revenues)***

This category is primarily reimbursement received for indirect costs (administration and building overhead) associated with federal grants and contracts such as the Special Supplemental Nutrition Program for Women, Infants, and Children (WIC) and Air Pollution. Also included are allowable fines levied for violation of public health laws (e.g., air pollution violations), rental fees, parking lot and meter receipts, and fees received for copies of vital records. This category also includes earnings from cash and investments. All JCDH investments are based on a Board of Health approved Investment Policy that strictly follows state and county guidelines.

# 2023 General Financial Information

## Expenditures (General Fund - \$55,377,906)

Expenditures are generally classified by major public health program with administrative costs and the Capital Fund transfer separately identified. General Fund expenditures for fiscal year 2023 include:

Salaries and Benefits	\$37,430,854	68%
Materials and Supplies	\$9,970,571	18%
Contract Services	\$6,776,481	12%
Capital Fund Transfers	\$1,200,000	2%
<b>Total</b>	<b>\$55,377,906</b>	<b>100%</b>

JCDH also has 17 Special Revenue Funds expected to total approximately \$38 million. Funding is received from federal awards passed through JCDH and designated for activities related to COVID-19, immunization, nutrition, storm water, emergency preparedness, and air pollution. These funds are operated in accordance with the funding requirements of special grants and appropriations.

# 2022 Health Statistics\*

Jefferson County's Population by Age (2022 Census Bureau 1-year Estimates) <sup>1</sup>	Age	Number of Residents
	Birth-14 years	124,334
	15-24 years	89,199
	25-64 years	338,190
	65 years and older	113,686
	<b>Total Population</b>	<b>665,409</b>

MATERNAL AND CHILD HEALTH 2022 (NUMBER AND RATE OR PERCENT) <sup>1, 2, 3</sup>				
	Number	Jefferson County	Alabama	United States
Live Births (women ages 15-44)	7,751	55.4 per 1,000 women ages 15-44	58.7 births per 1,000 women ages 15-44	56.0 per 1,000 women ages 15-44
Low Birthweight Births (<2,500 grams)	892	11.5%	10.4%	8.6%
Live Births to Teens (women ages 15 to 19)	390	17.5 per 1,000 women ages 15-19 9.2 per 1,000 women ages 10-19*	20.9 per 1,000 women ages 15-19 10.7 per 1,000 women ages 10-19*	13.6 per 1,000 women ages 15-19
Infant Mortality (among live births)	73	9.4 per 1,000 live births	6.7 per 1,000 live births	5.6 per 1,000 live births (provisional)
<i>Note: All birthweight and infant mortality data are based on live births.</i>				

\*Rate of live births per 1,000 women ages 10-19 (some births occurred to women aged 10-14).

COMMUNICABLE DISEASES 2022 (RATES PER 100,000 POPULATION) <sup>2, 4</sup>			
	Jefferson County	Alabama	United States
Chlamydia	914.3	612.4	495.0
Gonorrhea	450.2	261.7	194.4
Syphilis (primary & secondary)	28.3	23.5	17.7
Tuberculosis (TB)	1.5	1.3	2.5

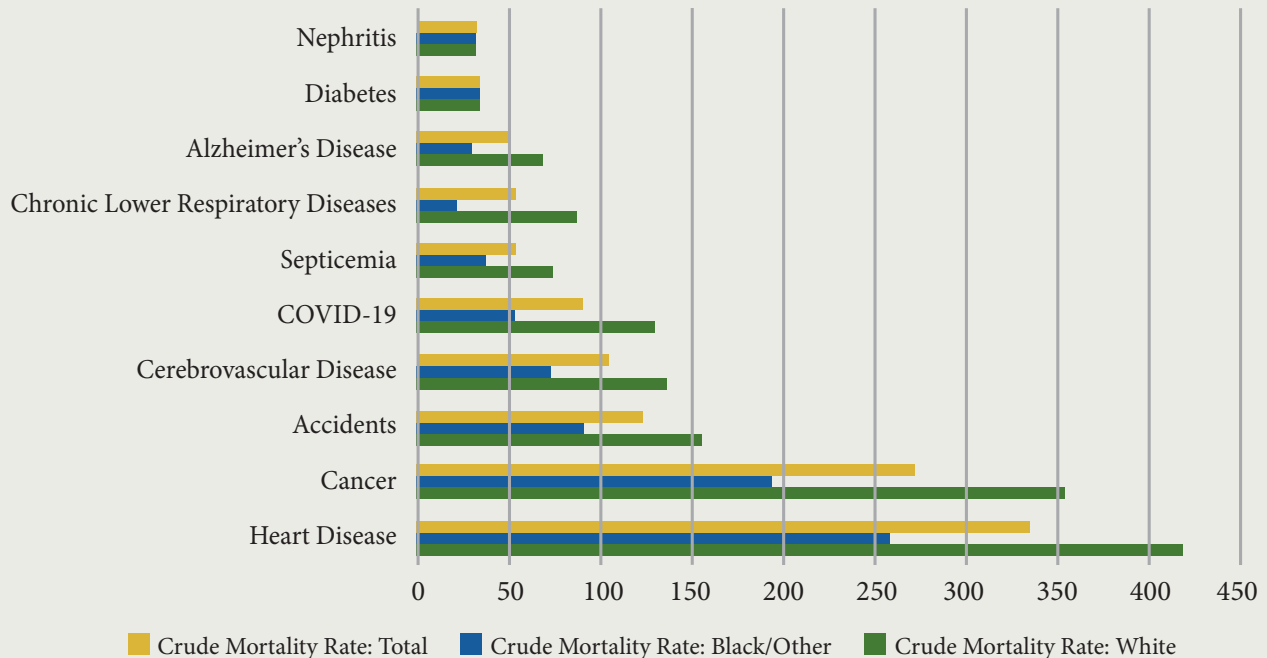


# 2022 Health Statistics\*

## CHRONIC DISEASES 2022 (CRUDE MORTALITY RATES PER 100,000 POPULATION)<sup>2</sup>

	Jefferson County	Alabama
Heart Disease	252.5	294.2
Cancer	196.9	202.9
Stroke	68.5	64.7
Alzheimer's Disease	43.6	52.2
Chronic Lower Respiratory Disease	43.6	62.1

## Provisional Ten Leading Causes of Death 2022 Crude Mortality Rate per 100,000 Population, Jefferson County, AL<sup>3,5</sup>



<sup>1</sup> United States Census; 2022 American Community Survey 1-year estimates for Jefferson County. [www.census.gov](http://www.census.gov)

<sup>2</sup> Alabama Department of Public Health (ADPH); [www.alabamapublichealth.gov/healthstats](http://www.alabamapublichealth.gov/healthstats)

<sup>3</sup> National Center for Health Statistics. [www.cdc.gov/nchs](http://www.cdc.gov/nchs)

<sup>4</sup> Centers for Disease Control and Prevention. [www.cdc.gov](http://www.cdc.gov)

<sup>5</sup> Accidental Deaths include deaths due to unintended drug overdose.

\*2023 Selected Health Statistics will be available in the 2024 Annual Report

This page intentionally left blank.







**JEFFERSON COUNTY  
DEPARTMENT OF HEALTH**